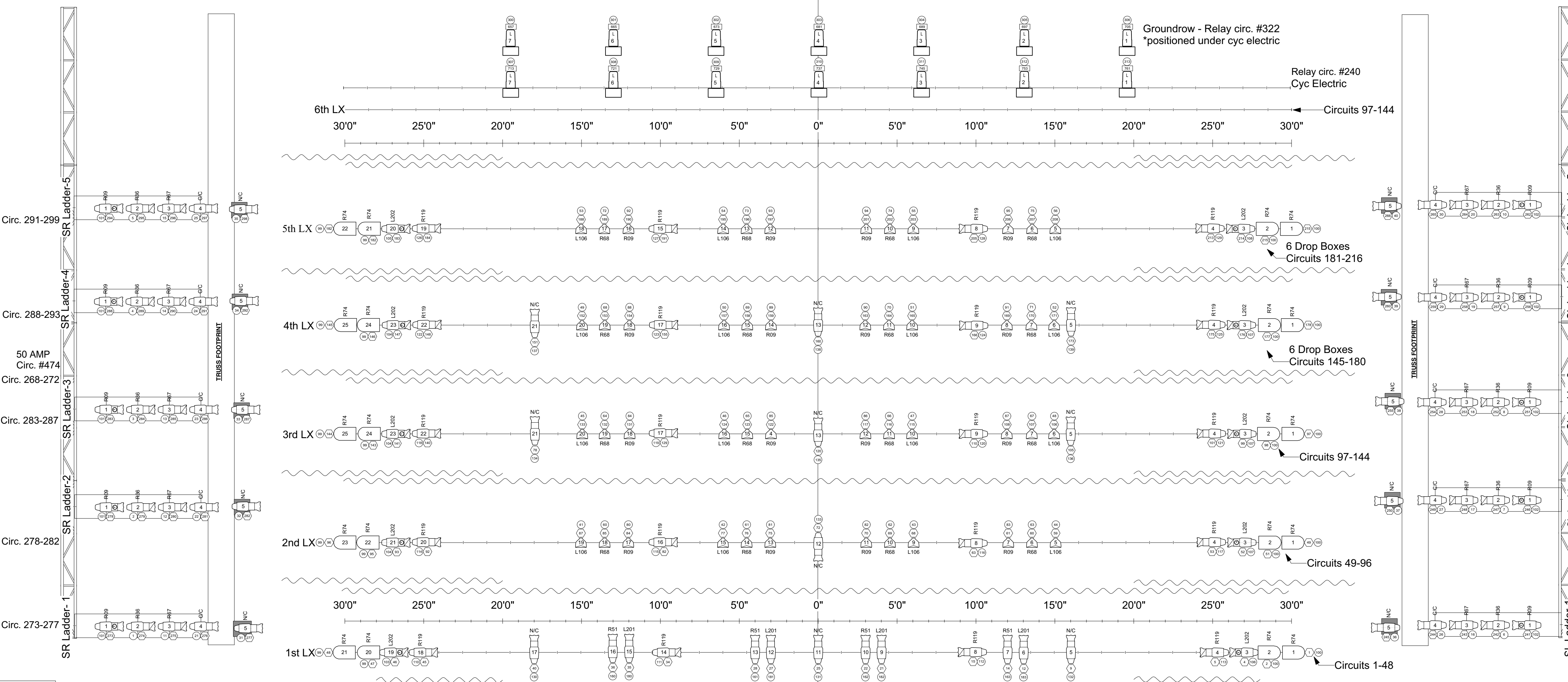


49'-0"	
48'-0"	
47'-0"	
46'-0"	
45'-0"	SCHMADA
44'-0"	SHARKTOOTH SCRAM (OLD)
43'-0"	TRAVELER TRACK
42'-0"	OLD BOUNCE
41'-0"	FLAT SPLIT BLACKOUT
40'-0"	BORDER
39'-0"	OLD SMALL LEG
38'-0"	
37'-0"	
36'-0"	
35'-0"	
34'-0"	
33'-0"	
32'-0"	
31'-0"	#5 ELECTRIC
30'-0"	
29'-0"	
28'-0"	BLACK LEGS #4
27'-0"	BORDER #4
26'-0"	
25'-0"	
24'-0"	
23'-0"	
22'-0"	BLACK LEGS #3
21'-0"	MIDSTAGE B.O.C.
20'-0"	
19'-0"	
18'-0"	#3 ELECTRIC
17'-0"	
16'-0"	SPLIT BLACKOUT (SMALL)
15'-0"	
14'-0"	BLACK LEGS #2
13'-0"	BLACK BORDER #2
12'-0"	
11'-0"	
10'-0"	#2 ELECTRIC
9'-0"	
8'-0"	MOVIE SCREEN (NEW)
7'-0"	BLACK LEGS #1
6'-0"	BLACK BORDER #1
5'-0"	MOVIE SCREEN
4'-0"	
3'-0"	#1 ELECTRIC
2'-0"	
1'-0"	SMALL LEGS
0'-0"	ACT CURTAIN
	RED VALANCE



SIDE TRUSSES ARE RIGGED W/ TWO (2) TON MOTORS FOR IN / OUT TRAVEL  
 FLADDERS LAND @ 37' OFF OF CL

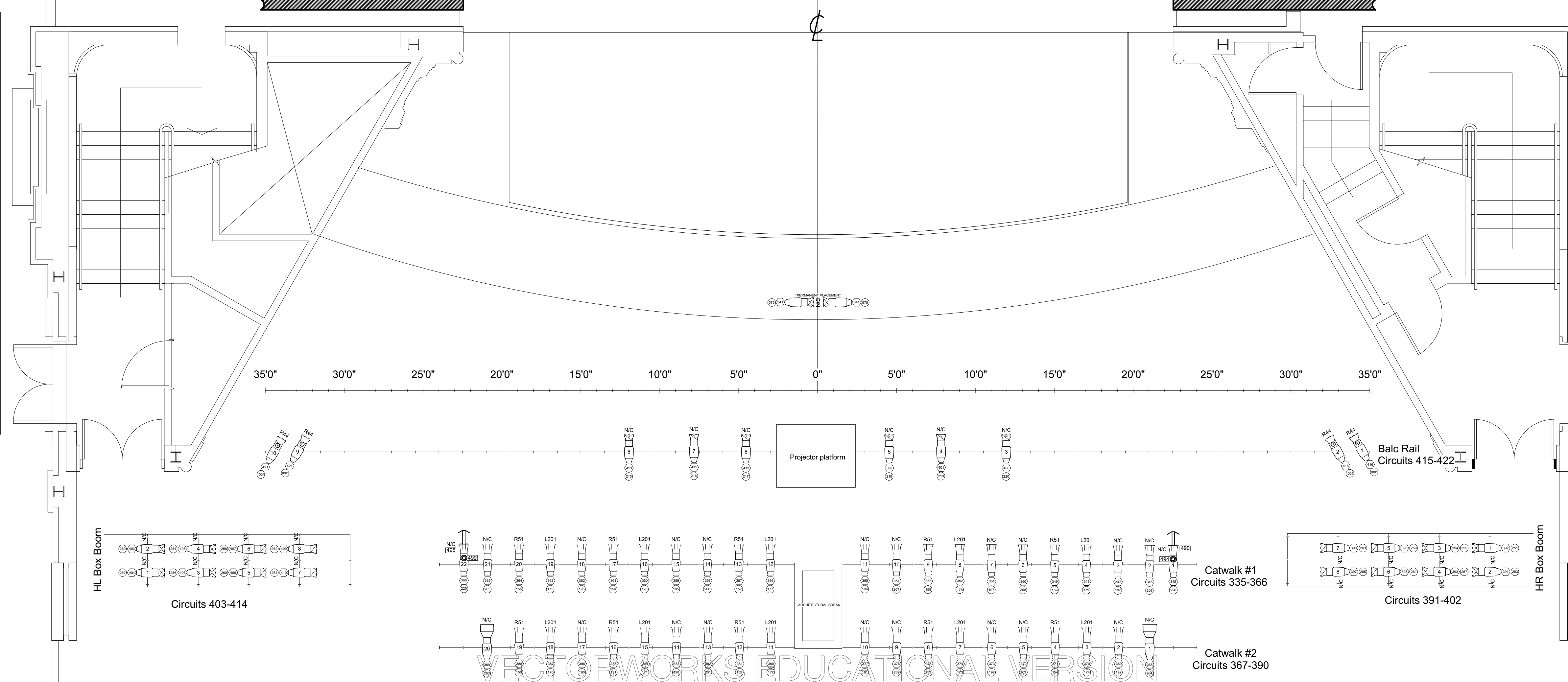
	Rosco DMX Iris	2 / 2
	I-Cue	2 / 2
	Altman PAR 64 MFL	20 / 20
	ETC CE Source4 PAR MCM (WFL)	48 / 48
	ETC Source4 10deg	2 / 2
	ETC Source4 14deg	40 / 40
	ETC Source4 19deg	10 / 87
	ETC Source4 26deg	58 / 60
	ETC Source4 36deg	52 / 70
	ETC Source4 50deg	0 / 2
	ETC Source4 LED2LS Cyclight	14 / 14
	ETC Source4 Zoom 15-30deg	6 / 6
	Ultratec Radiance Hazer	1 / 1

House Lights: Chan 1000  
 Circ. 445-461  
 Pictures & Nancy Circ. 445, 415 & 422 @ 20%

Curtain Warmers: Chan 1001

Non-Dimmable Work Lights: Chan 1005  
 Circ. 17, 32, 55, 91, 150, 172

Notes  
 - Electrics #1-5 Trim at 26' to pipe  
 - Units hang on 18" centers unless otherwise noted  
 - All FOH circuits (335-422) disconnect @ panel stage left  
 - Electrics 1-3 & 6 are 50' long, 4-5 are 70' long  
 - FOH positions are not drawn at scale distance from stage



<h3>Kingsbury Hall</h3>	
Rep. Light Plot	Date : 03/25/2019
Drafted by : Ashley Barentine	Scale : 1/4" = 1'
Revisions :	1 OF 1
KINGSBURY HALL THE UNIVERSITY OF UTAH	